

ARTREEFS

Innovative tools for coastal tourism

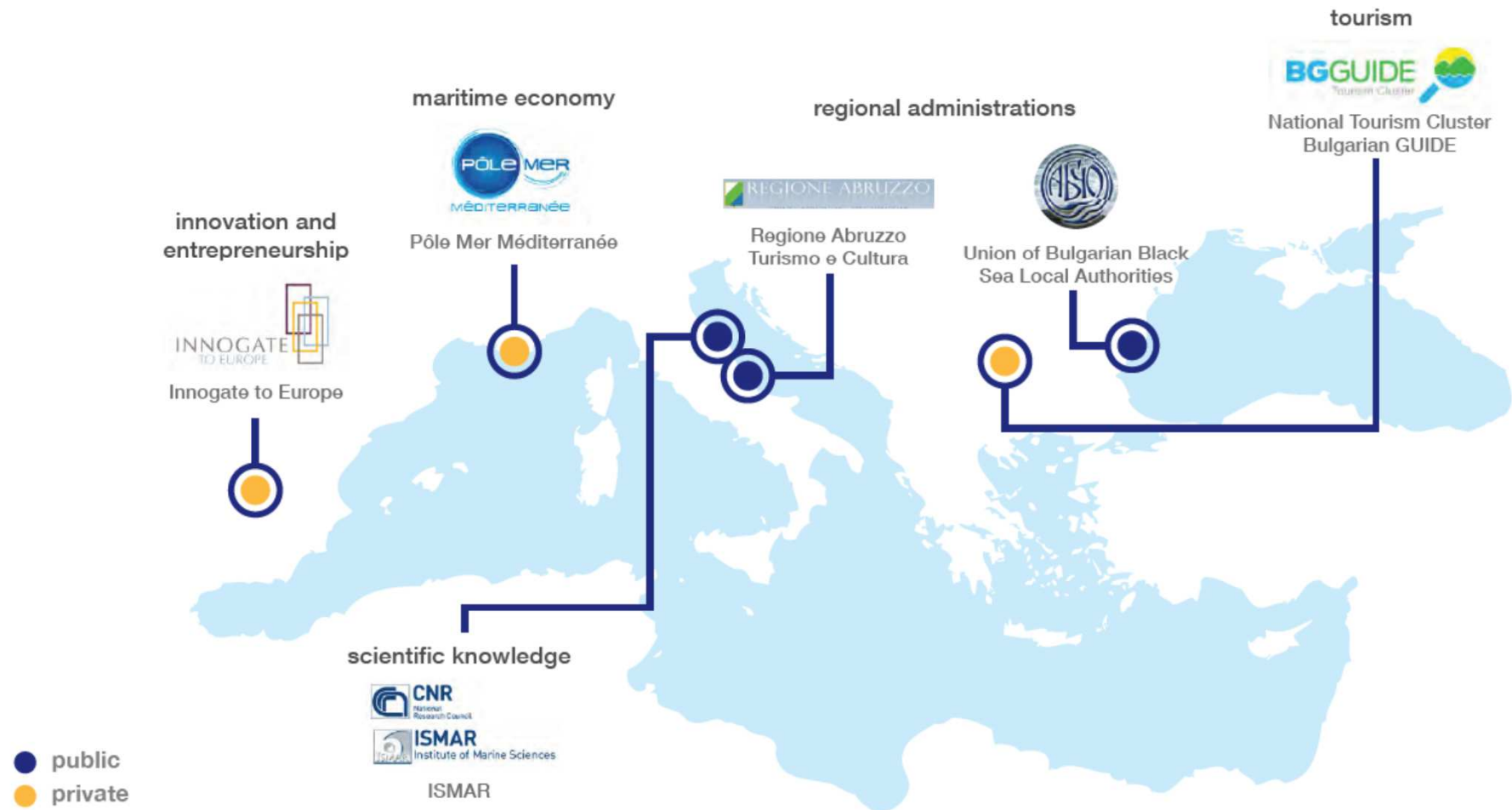


ArtReefs project has received funding from the European Union under grant agreement No. EASME/EMFF/2015/1.2.1.7/03/SI2.735917



- Managed by **EASME** Executive Agency for Small and Medium Enterprise and co funded under the **EMFF** European Maritime and Fisheries Fund
- Proposal in the context of the Integrated Maritime Policy in the Black Sea and/or Mediterranean Sea regions
- **24 months** from 01/08/2016 to 31/07/2018
- **EU contribution** 167.520,00 EUR (80%) with a contribution of the partners (20%) to reach a total budget of 209.401,00 EUR
- **6 Project partners** from The Black Sea and Mediterranean

Consortium



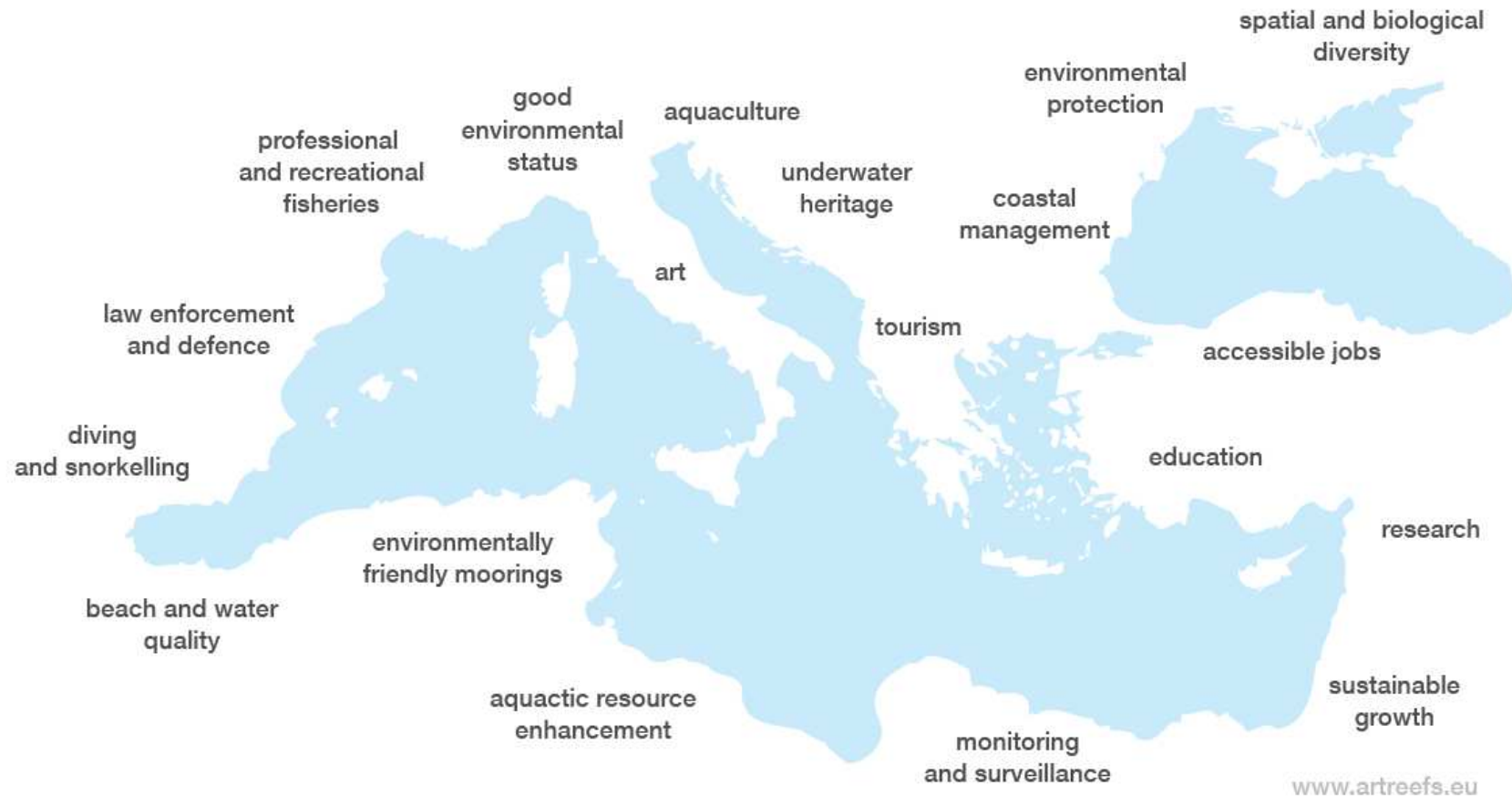
Build a public-private-partnership for the creation of comprehensive tourism packages around multiuse Artificial Reefs:

- Highly innovative
- Unites various Integrated Maritime Policy related stakeholders
- Offers competitive new business opportunities
- Eco designed and based on ecological engineering with the objective to promote the good environmental status (additional objective)
- Provides sustainable solutions that can be transferred to other regions/countries

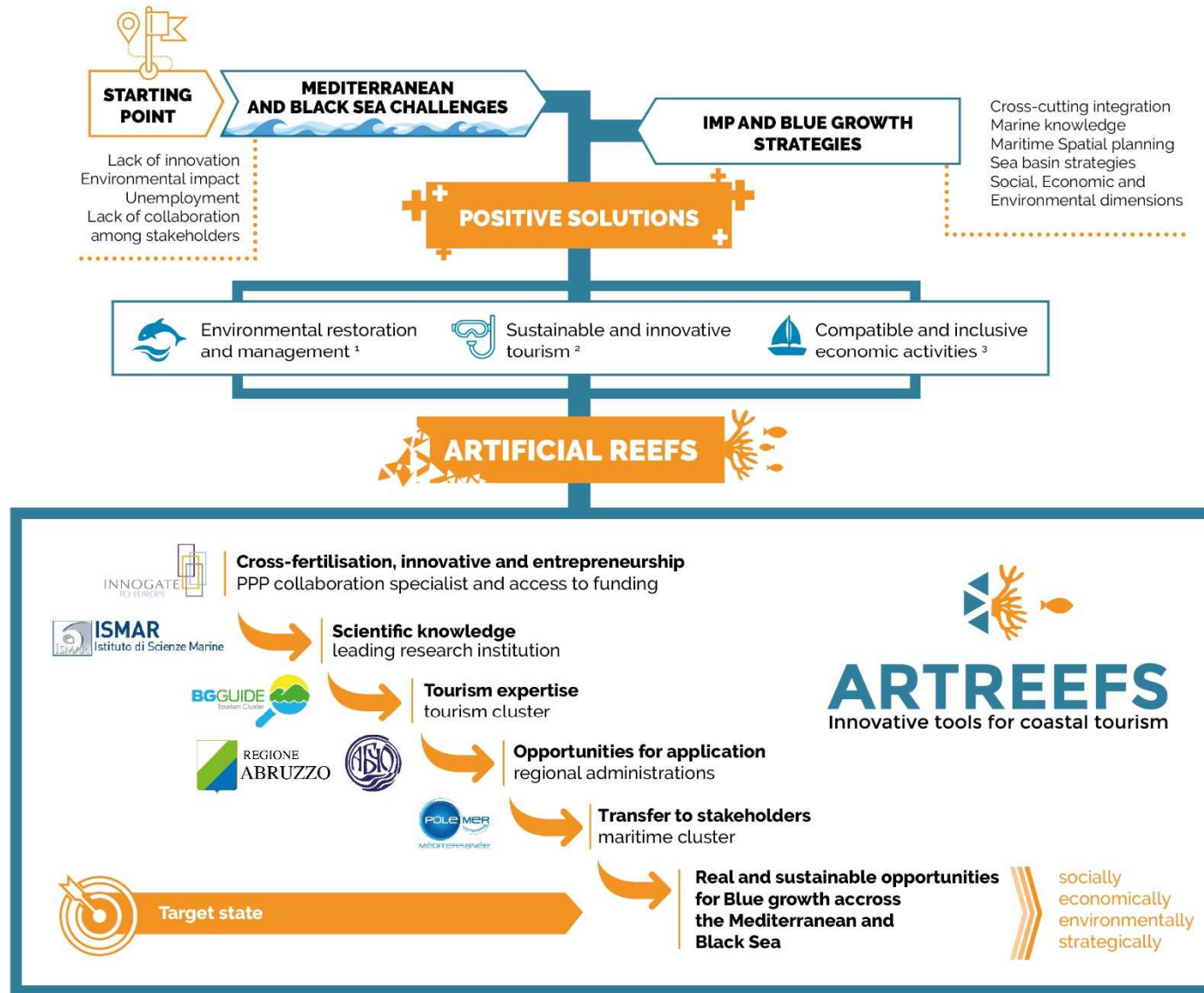
Scope

Diverse and combinable applications

Innovation + smart planning + entrepreneurship + participation + collaboration



Overall approach



1 E.g. to enhance environmental quality, biodiversity and biomass, spatial diversity, sediment stability and water transparency

2 E.g. better beaches, diving and snorkelling, recreational angling, yachting and moorings, heritage and art and gastronomy

3 E.g. fisheries and aquaculture, monitoring and surveillance, research and education, maritime spatial planning and coastal management

Expected impacts

- Increased cooperation between maritime stakeholders and other **Integrated Maritime Policy** (IMP) related stakeholders
- Increased awareness and coordination between IMP related stakeholders as regards seizing the opportunities stemming from using artificial reefs for innovative tourism and Blue Growth
- Sustainable public-private partnership on **comprehensive ArtReefs tourism packages**
- Increased **use of innovative eco-friendly solutions**
- Review and updating of **regulations, licensing and management plans** for new artificial reefs
- Guidelines and tools **ready to be transferred to diverse stakeholders**, leading to new business opportunities, competitiveness and growth potential in the two basins



ARTREEFS
Innovative tools for coastal tourism

Contact us Info@artreefs.eu

Visit our website <http://www.artreefs.eu/>

Follow us on



@ArtReefs



ArtReefs project has received funding from the European Union under grant agreement No. EASME/EMFF/2015/1.2.1.7/03/SI2.735917

